

Bristol South Hate Crime – Period Ending July 2016

Summary

- In the 12 month period ending June 2016, there were around **445 hate crimes** recorded by police in South Bristol
- Race was a motivating factor in around **two-thirds** of all hate crime incidents
- There have been **increases in the volume of reported disability hate crime** in the 12 months ending June 2016, compared against the previous 12 month period

Hate Crime Overview

In the 12 month period ending June 2016, there were around **445 hate crimes** recorded by police in South Bristol, an average of 37 per month. There has been a **general upward trend** in the monthly volumes of hate crimes reported in Bristol South since at least January 2015, as shown in the following chart:

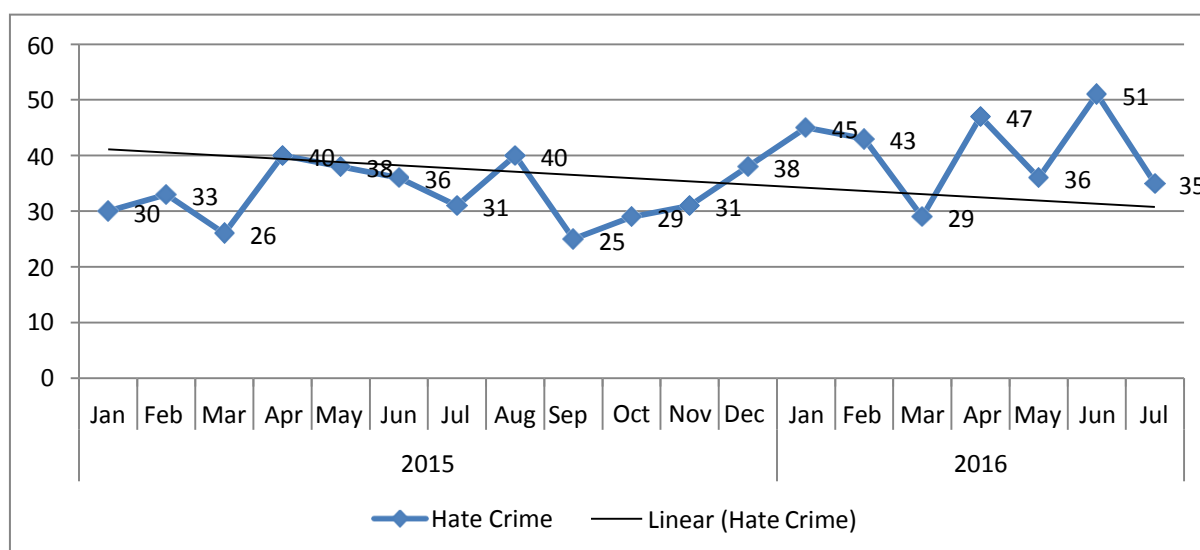


Figure 1: Hate Crimes by Offence Group, 12 Months ending June 2016, Bristol South

The increase in hate crime incidents aligns with a general rise in violence against the person incidents recorded by police. Notable rises in the category of **'violence without injury'** offences – an offence which accounts for many of the hate crimes reported. Much of this rise is linked to improvements in recording and identification of crimes owing to actions taken by the police following findings from a national HMIC inspection.

In the context of hate crime, this may indicate that whilst there are rises in the volume of recorded incidents, the **underlying level of offending may not have increased**. Ongoing training of police staff will have further assisted in the accurate recognition and recording of hate crimes. Additionally, efforts by police and partner agencies to increase victim confidence to report crimes may have played a part.

Of offences reported in Bristol South in the 12 month period ending Jul 2016, around **83 per cent** (371) of hate crimes were classified as 'violence against the person' (VAP) offences. Of these VAP offences, the majority of offences were incidents where the offender has **caused intentional harassment, alarm of distress** to the victim. Nine per cent (41) of offences were criminal damage incidents, the second highest volume by offence group.

In around 278 incidents, **race was identified as a motivating factor** for the offending behaviour. The second most common motivating factor for offending was **disability**, which was a factor in **56 incidents**. The following table provides a breakdown by type:

Motivating Factor	Number of Incidents ¹
Age	4
Disability	56
Gender	1
Homophobic	45
Racial	278
Religious	22
Transphobic	8

Table 1: Hate Crime Motivating Factor, year ending July 2016

The location of hate crime incidents varies across the neighbourhood area, as showing in the following chart²:

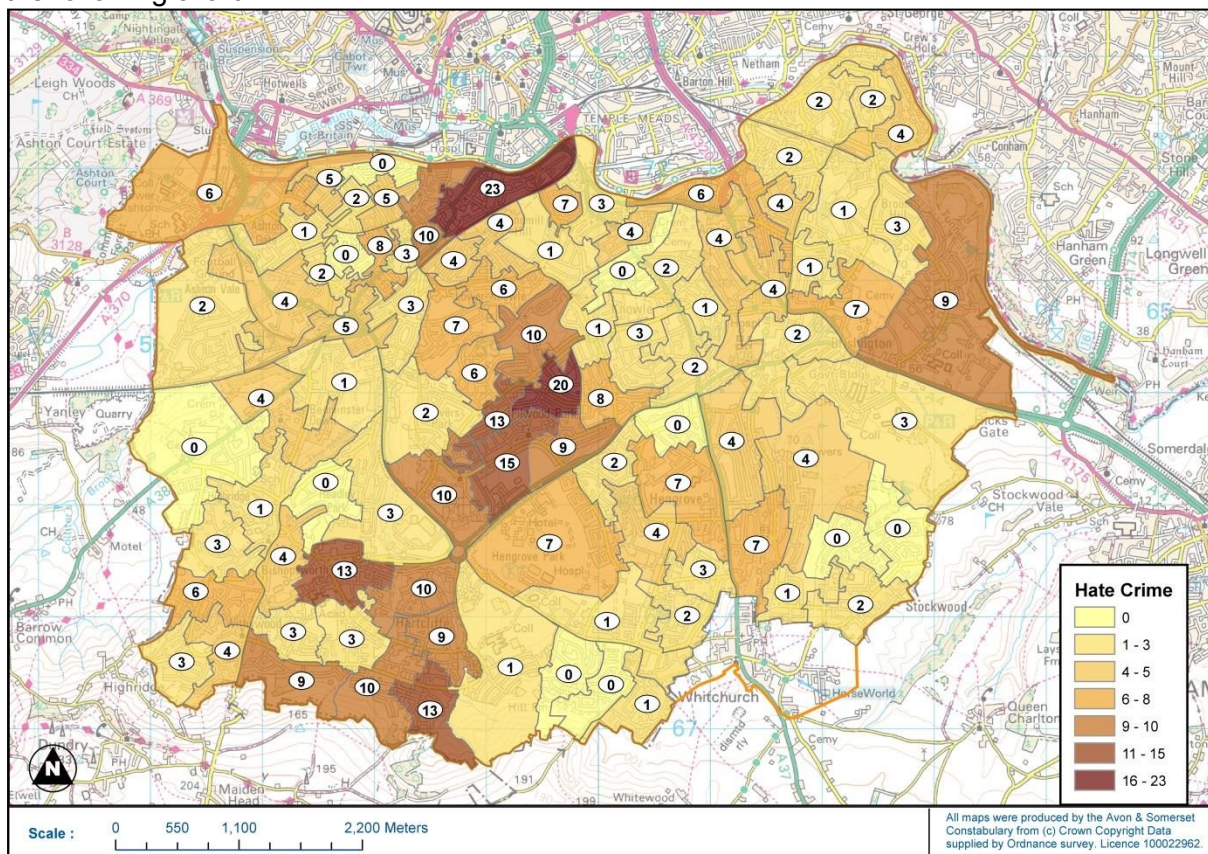


Figure 2: Hate Crime count by LSOA, Year ending June 2016

¹ Incidents can contain more than one hate crime flag type; therefore the sum may be greater than the number of incidents.

² Maps showing counts by hate crime type (where more than 10 incidents have been recorded across the LPA) are included in the appendices

The following Lower Super Output Areas (LSOA) each had 10 or more incidents reported in the 12 months ending July 2016 – these areas account for **over a third of all hate crime** incidents in South Bristol:

LSOA	LSOA Local Name	Total
E01033359	Bedminster East	23
E01014585	Ilminster Avenue West	20
E01014581	Filwood Broadway	15
E01014582	Leinster Avenue	13
E01014727	Bishport Avenue East	13
E01014594	Whitchurch Lane	13
E01014580	Inns Court	10
E01014593	Fulford Road North	10
E01014726	Hareclive	10
E01014578	Wedmore Vale	10
E01033361	Bedminster West	10

Table 2: >=10 Incidents by LSOA, year ending July 2016

Hate Crime Victims

Where details were known, there was an **even split of male and female victims** of hate crime, with 193 female victims and 189 male victims. The following chart provides an overview of victims by age group and gender:

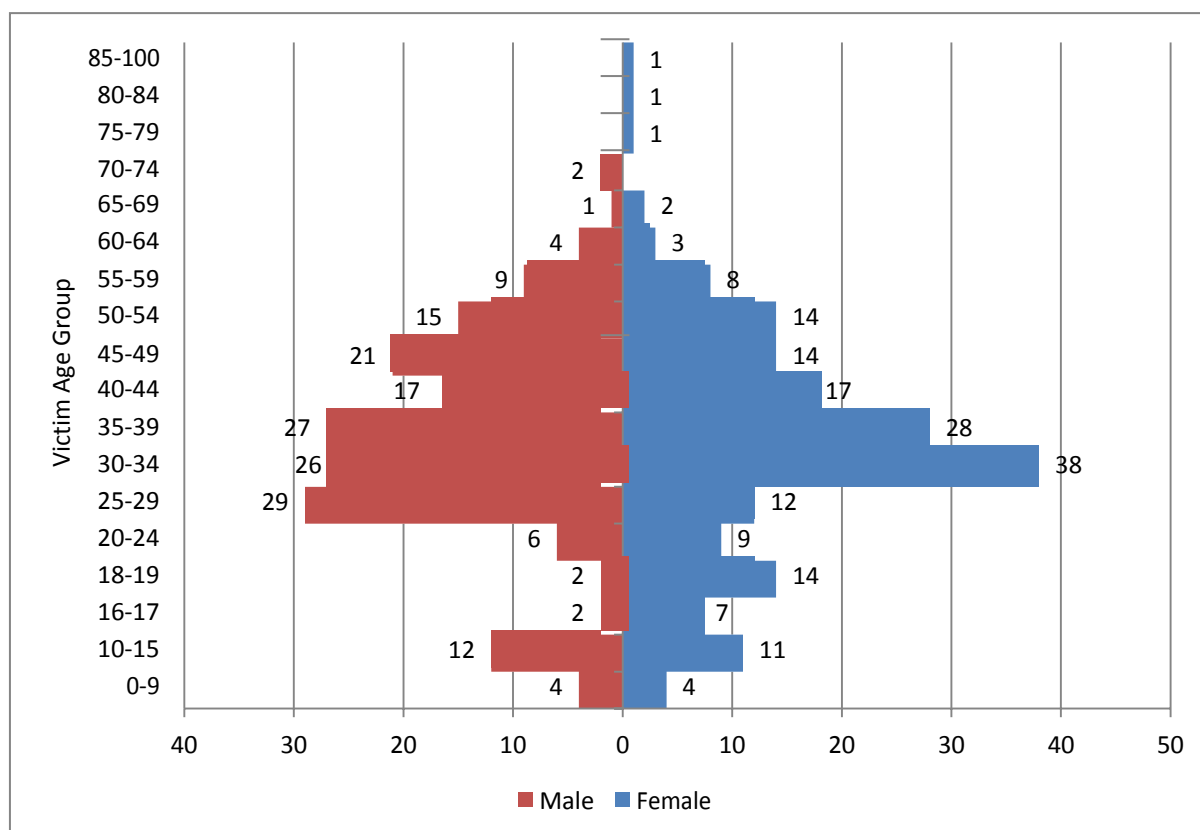


Figure 3: Hate Crime Victims by Gender and Age, 12 months ending June 2016

Where known, around **half of victims** self-defined their ethnicity as 'White-British'.

Victim - Self Defined Ethnicity	Female	Male
A1. Asian - Indian		8
A2. Asian - Pakistani	3	8
A3. Asian - Bangladeshi		1
A9. Any other Asian background	1	11
B1. Black Caribbean	9	7
B2. Black African	10	12
B9. Any other Black background	10	
M1. White & Black Caribbean		2
M2. White & Black African	4	2
M9. Any other mixed background	2	2
NS. Not stated	5	3
O9. Any other ethnic group	2	5
W1. White British	61	53
W2. White Irish	2	
W9. Any other white background	9	7

Table 3: Victim Self-Defined Ethnicity by Gender, year ending June 2016

Crime Outcomes

To date, around **nine per cent** of hate crime incidents have resulted in a **positive outcome**.³ In around **17 per cent** of incidents, a suspect was identified, but the **victim did not support prosecution**. The following provides a breakdown of outcomes:

Outcome	Total
CO 18 No suspect - Investigation complete - Filed pending further info	115
New ⁴	91
CO 16 Evidential difficulties - Victim not supporting - Named suspect Id'd	74
Hist - UU undetected	38
CO 15(a) Police decision - Victim supports/Evidential difficulties Suspect Id'd	34
CO 1(a) Charged	30
CO 14 Victim declines/unable to identify offender - Named suspect not Id'd	28
CO 10 Formal action not in public interest (Police decision)	11
CO 15(b) CPS decision - Victim supports/Evidential difficulties Suspect Id'd	6
CO 1(b) Postal Requisition (summons)	5
(Blank) ⁵	3
CO1(c) - Charged alternative offence rule	2
CO 3(b) Caution - Adult conditional	2
CO 2(b) Caution - Youth conditional	1
CO20 - Other agency dealing (Investigative Primacy)	1
CO 17 Prosecution time limit expired	1
CO 8(a) Community resolution	1
CO 3(a) Caution - Adult	1
CO 9 Not in the public interest (CPS Decision - All offences)	1

Table 4: Hate Crime Outcomes, year ending July 2016

³ Charge; caution; summons; community resolution;

⁴ Ongoing investigation

⁵ ASB Incident record

Appendices

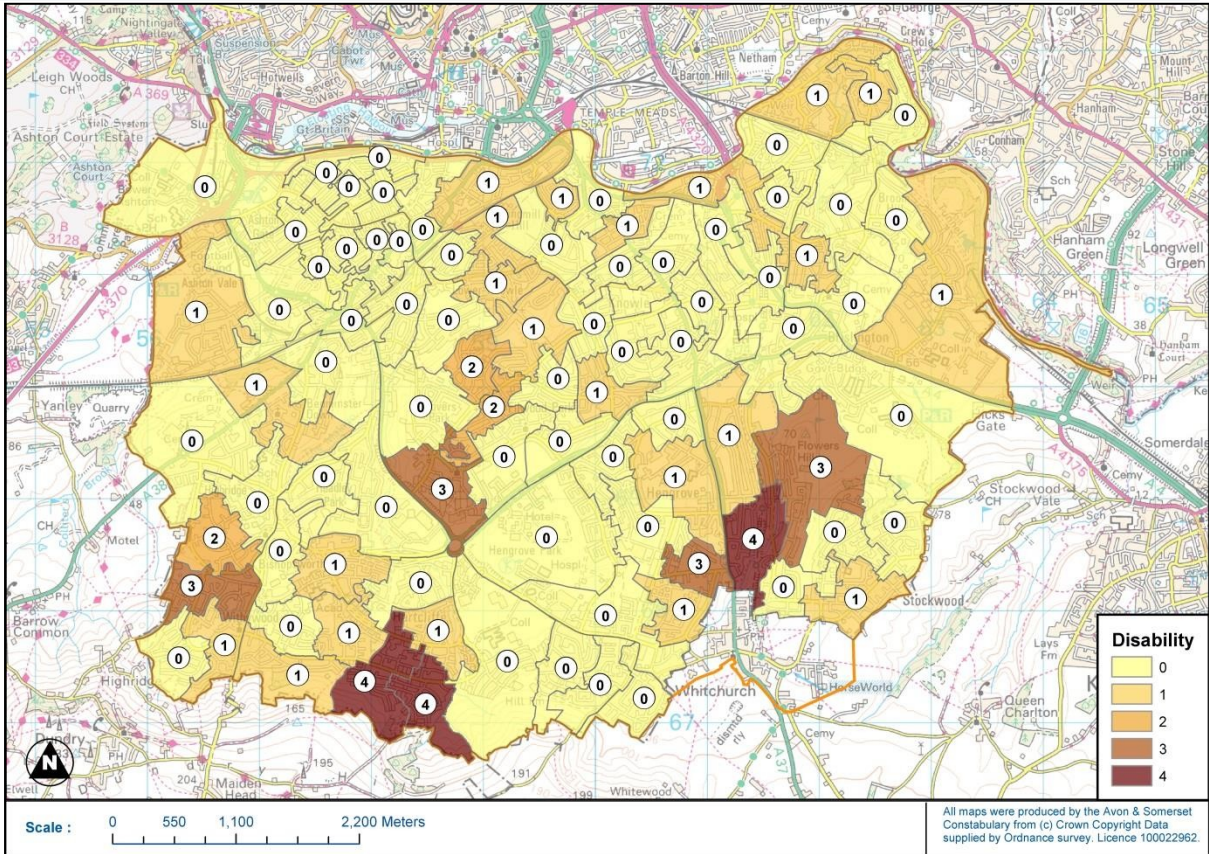


Figure 4: Disability Hate Crime Incidents by LSOA, year ending July 2016

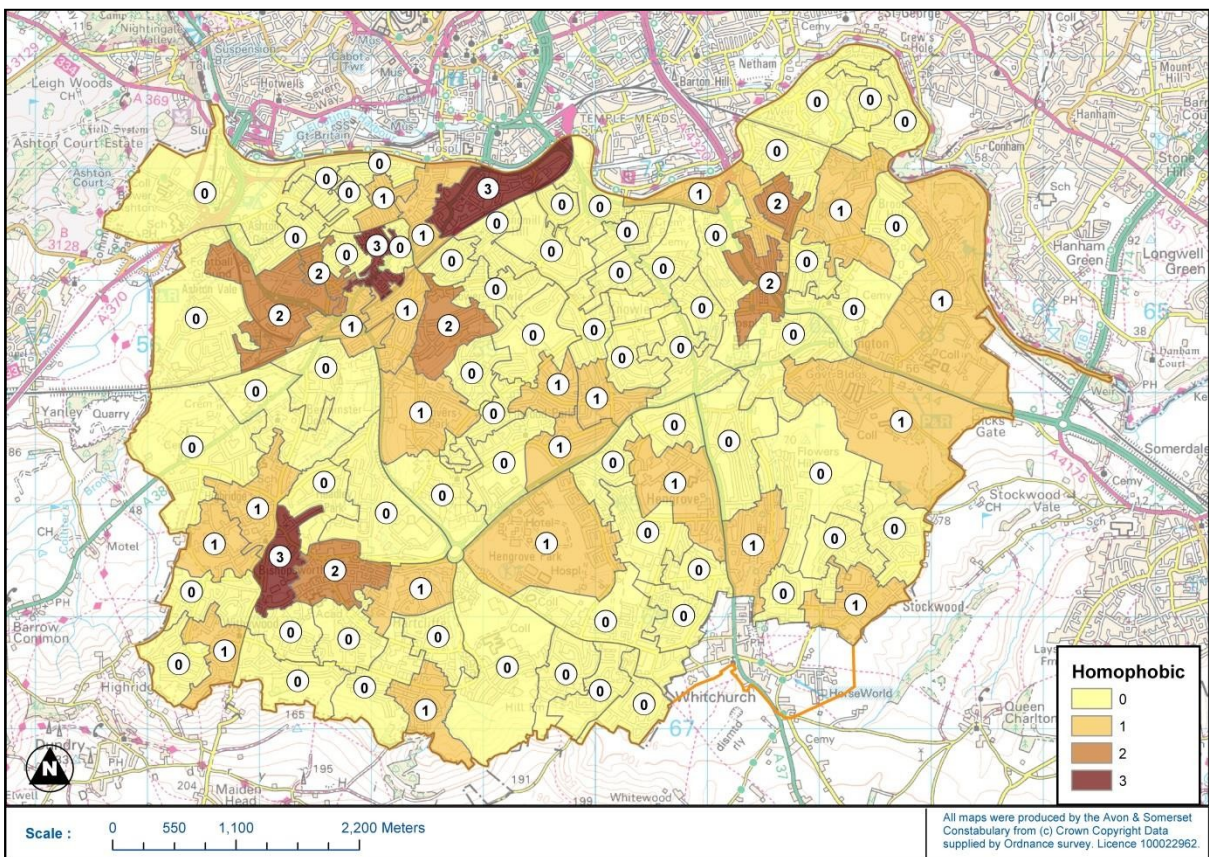


Figure 5: Homophobic Hate Crime Incidents by LSOA, year ending July 2016

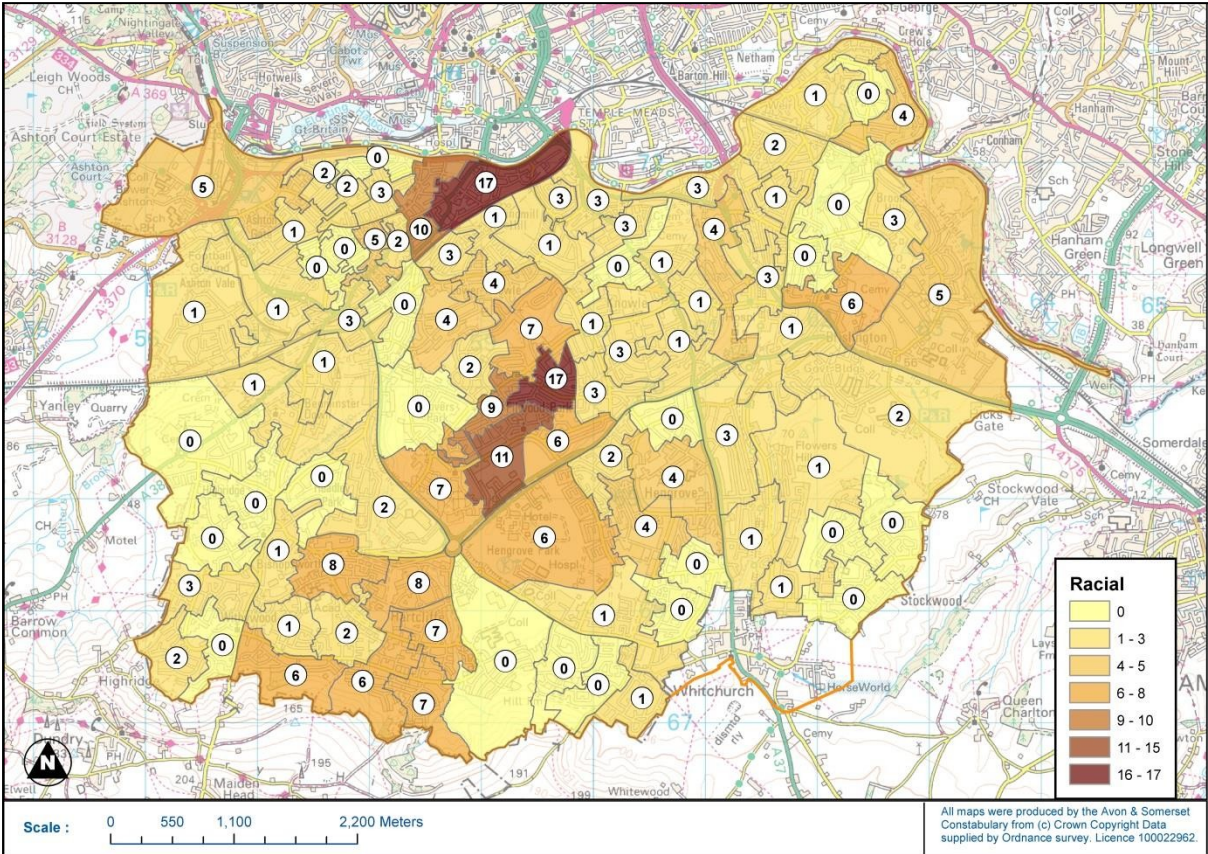


Figure 6: Racial Hate Crime Incidents by LSOA, year ending July 2016

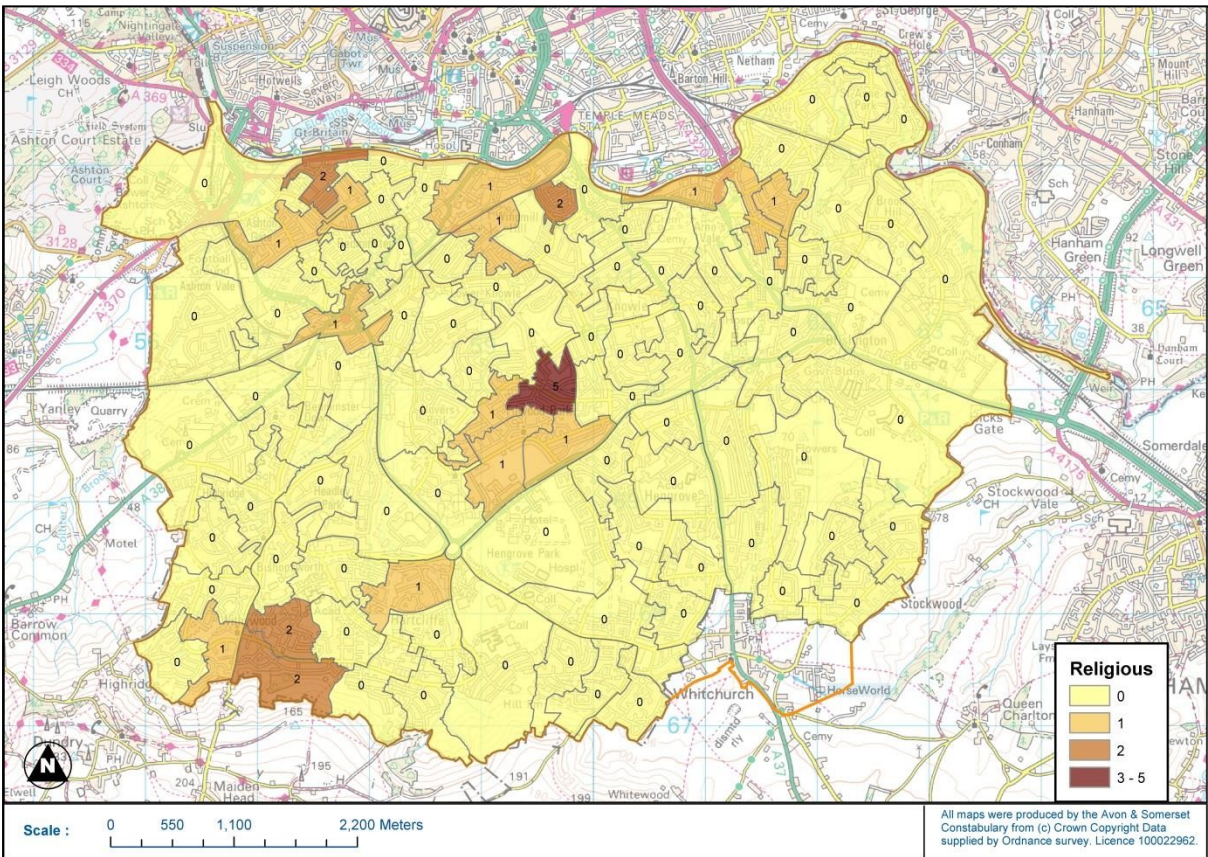


Figure 7: Religious Hate Crime Incidents by LSOA, year ending July 2016